

Datasheet

Excel Life™ Smart

Clip-in Wireless Switch

CAT. NO. EWNWCWE, EWNWCMW, EWNWCMB



EWNWCWE



EWNWCMW

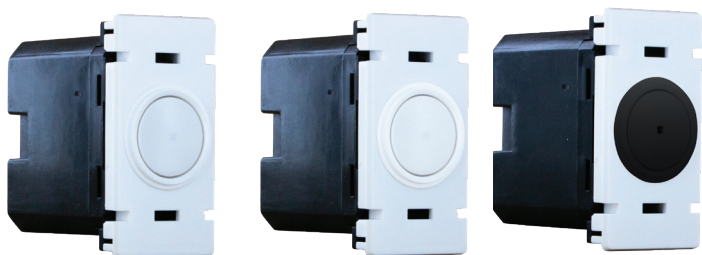


EWNWCMB

Cat. No.	EWNWCWE	EWNWCMW	EWNWCMB
Colour	White (WE)	Matt White (MW)	Matt Black (MB)
Description	Clip-in Wireless switch		
Battery	CR2032 3 V d.c.		
Wired/Wireless	Wireless		
Wireless Connectivity	Zigbee 2.4 Ghz to 2.4835 Ghz		
Mounting	Clip in Excel Life™ Smart grids: EWN770/1GPL, EWN770/2GPL, EWN770/3GPL, EWN1GPL, EWN2GPL, EWN3GPL series		
Product Dimension (W X H X D)	48 x 24 x 43 mm		
Compliance	AS/NZS 60669.2.1, AS/NZS 4268, ETSI EN 300 328		

Excel Life™ Smart Clip-in Wireless Switch

CAT. NO. **EWNWCWE, EWNWCMW, EWNWCMB**



FEATURES

- Wireless Switches to expand an Excel life™ Smart installation (requires prior installation of Starter kit EWNSKIT series or Gateway Cat. No. 412181).
- Enable multi-way switching and remote control of Excel life™ Smart light Switches, Micromodules or Powerpoints.
- Can control up to 20 Excel life™ Smart wired products.
- Clip into Excel Life™ Smart grids for a perfect integration alongside other Excel Life™ Smart and Excel Life™ mechanisms.

Single product	
Cat. No.	Barcode
EWNWCWE	9321001523581
EWNWCMW	9321001523598
EWNWCMB	9321001523604

Inner box (QTY 10)	
Cat. No.	Barcode
EWNWCWE	9321001523765
EWNWCMW	9321001523772
EWNWCMB	9321001523789

Outer box (QTY 120)	
Cat. No.	Barcode
EWNWCWE	9321001523949
EWNWCMW	9321001523956
EWNWCMB	9321001523963

Legrand Australia
1300 369 777
www.legrand.com.au
ABN 31 000 102 661

Legrand New Zealand
0800 476 009
www.legrand.co.nz

Refer to your group buying office, Legrand Sales Representative or Legrand Sales Office for pricing.

Please note: specifications are subject to change without prior notice.



LE14251AB

05 / 2024